



# S-2000 ROLLER BEARINGS

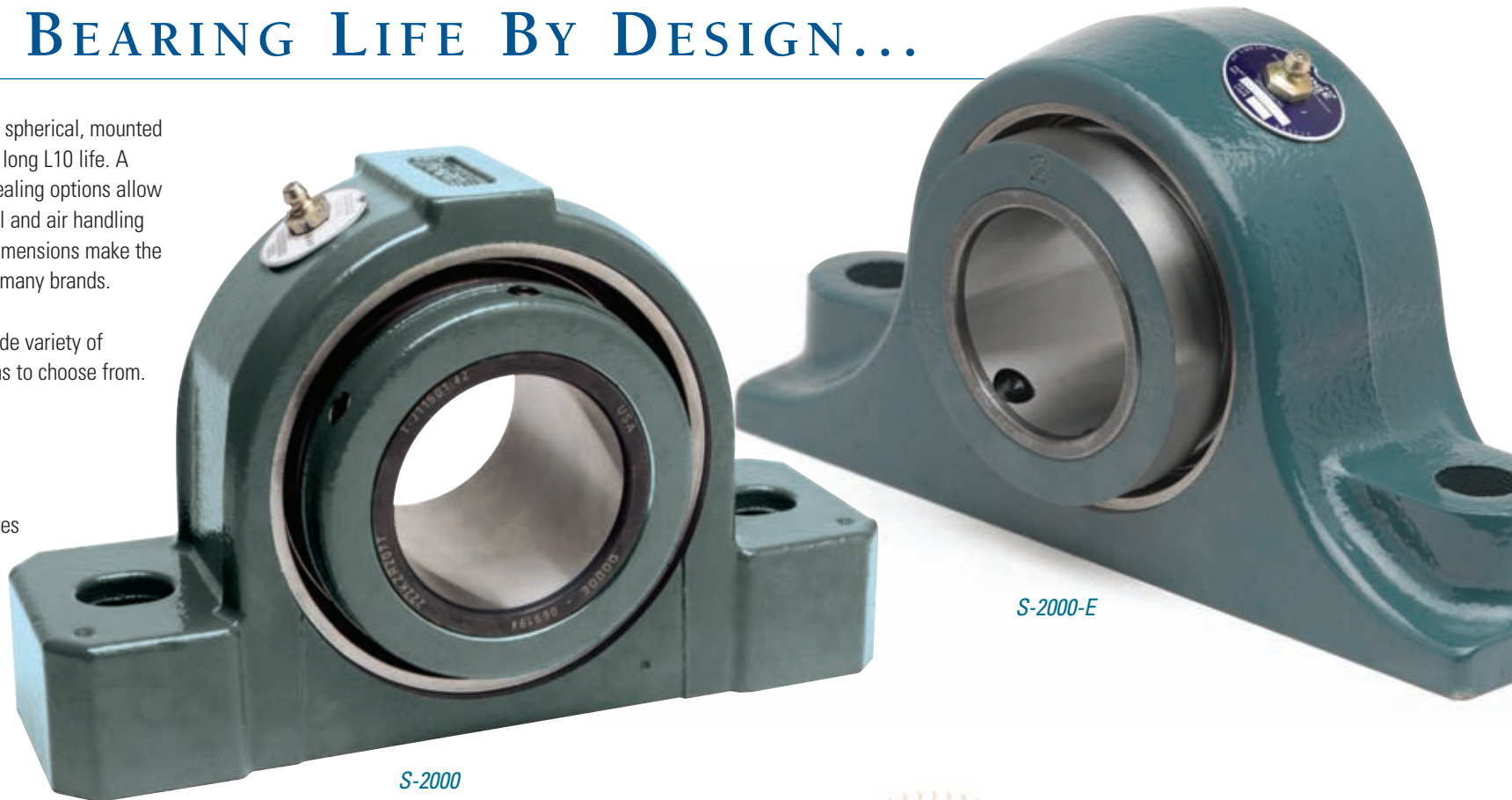
## S-2000 MOUNTED SPHERICAL ROLLER BEARINGS

# LONGER BEARING LIFE BY DESIGN...

These unit-housed, double-row spherical, mounted bearings have high ratings and long L10 life. A variety of housing styles and sealing options allow for easy application on material and air handling machinery. Industry standard dimensions make the products interchangeable with many brands.

The S-2000 bearing offers a wide variety of compact, gray iron constructions to choose from. All S-2000 bearings include:

- Standard Trident seal
- Labyrinth seal option
- Easy installation features
- Extended life bearings
- Single snap ring movable for expansion



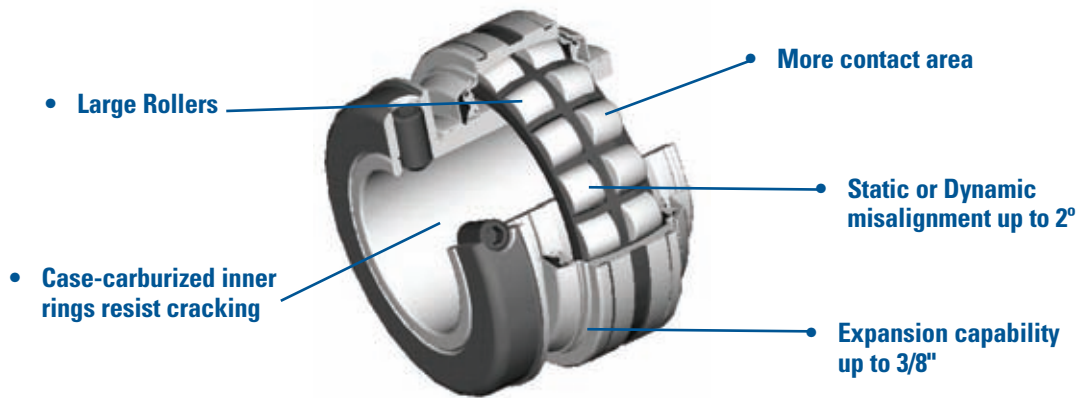
S-2000

S-2000-E

All DODGE bearings are manufactured under a quality system registered to ISO 9002 by Underwriters Laboratories.

**DODGE**<sup>®</sup>

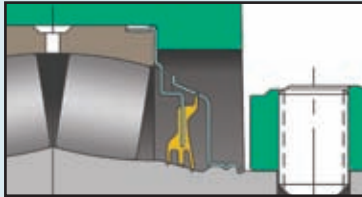




**INSTALLATION SAVINGS...**

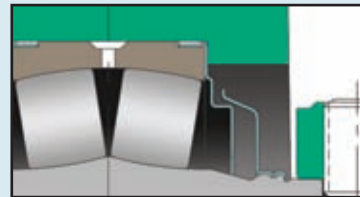
- Factory lubed and sealed
- Ready to slip onto the shaft
- 65° Springlok collar mount for increased holding power versus 90° or 120°
- Field convertible from non-expansion to expansion and expansion to non-expansion
- Elongated bolt holes to facilitate mounting

**S-2000 BEARINGS OFFER PATENTED SEAL OPTIONS TO MAXIMIZE BEARING LIFE...**



**TRIDENT® Seals** – for dirty environments, low to medium speed and normal ambients

- Triple lip rubbing seal for maximum sealing protection
- Nitrile seal material for low coefficient of friction
- Seal land maintains full seal contact pressure when misaligned
- Corrosion resistant flingers

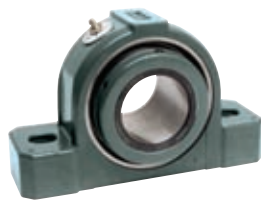


**Labyrinth Seals** – for high speeds and higher ambients

- Clearance steel seal carrier
- Corrosion resistant flingers
- Close proximity of seals to bearing ensures grease purge of contaminants

	Trident Seal	Labyrinth Seal
Dusty/Dirty	++	+
Wet/Moisture Laden	+	-
High Pressure Washdown	+	-
High Temperature	-	+
High Speed	-	++
Chemical	•	•
Misalignment	+	+

++ Very Good  
 + Good  
 - Not Recommended  
 • Questionable  
*(depends on condition; Consult DODGE Engineering)*



Pillow Blocks  
 Two-Bolt—1 3/8"-3 15/16"  
 Four-Bolt—1 15/16" to 4 15/16"

Flanged Bearings  
 Four-Bolt—1 3/8" to 3 15/16"  
 Piloted—1 3/8" - 4 15/16"

Take-up Bearings  
 Wide Slot—1 3/8"-4 15/16"  
 TPU—1 15/16" to 4 15/16"



## **ONLY THE BEST BEARINGS COME FROM THE BEST PLANT**

Our DODGE® Type E, S-2000 and S-2000-E, and IMPERIAL® and IMPERIAL-E bearings are the best. Manufactured at our Marion, NC, plant—one of *IndustryWeek's* Top 10 Best Plants for 2004—they represent the best in roller bearing technology and innovation.

When you want the best bearings, look to DODGE and our Best Plant in Marion, NC. Together, they are your best source for performance-proven solutions.





---

**World Headquarters**

P.O. Box 2400, Fort Smith, AR 72902-2400 U.S.A., Ph: (1) 479.646.4711, Fax (1) 479.648.5792, International Fax (1) 479.648.5895

**Baldor - Dodge**

6040 Ponders Court, Greenville, SC 29615-4617 U.S.A., Ph: (1) 864.297.4800, Fax: (1) 864.281.2433

[www.baldor.com](http://www.baldor.com)